



Lesson #2

Diamonds Baby Afghan (#16)

From the Book, Our Best Knit Collection by Leisure Arts (1998).

Materials you will need:

Our Best Knit Collection by Leisure Arts (1998)

Artisan Knitting Machines Model 70D Instruction Book

Paper with grid helpful, or knitter's graph paper (optional)

Dark marking pencil and pen (sharpie)

Enough yarn to complete your project (approx 20 oz)

Colored sticky dots or removable markers to mark key knitting needles on the knitting machine bed (optional)

Knitting Skills You Will Need to Know for Lesson #2

How to take a gauge

Measuring your tension swatch

Picking up stitches—from waste yarn and nylon ravel cord

Casting on your main bed machine by e-wrap or crochet methods

Binding off your machine by crochet, backstitch, or needle transfer-knit method

Transferring your stitches from the main bed (MB) to the ribber (RB) and vice versa to create the garter stitch (knit 1 row, purl 1 row)

Knitting Terms You will Need to Know for Lesson #2

K2 tog-Single decrease-This stitch slants to the **right** on the **knit side** of your fabric. If you **move your stitch to the left on your knitting machine**, purl side facing you, the upper stitch slants to the right on the knit side of the fabric.

P2 tog- Single decrease-This stitch slants to the **right** on the **knit side** of your fabric. **Move one stitch to the left on your knitting machine**; purl side facing you, the upper stitch slants to the right on the knit side of the fabric.

Hint: K2 tog=P2 tog Why? Look at your hand knit diagrams in your Lesson Book. Notice the direction in which the stitches are knitted off with the other knitting needle. It creates the same effect on the knitted side.

SSK-Slip, Slip, Knit- Single decrease- This stitch slants to the **left** on the **knit side** of your fabric. This is a single left slanting decrease on the knitted (right) side of your fabric. If you **move one stitch to the right on the knitting machine**, purl side facing you, the upper stitch slants to the left on the knit side of the fabric.

K1 PSSO- Single decrease- This decrease slants to the **left** on the **knit side** of your fabric. If you **move one stitch to the right on our knitting machine**, the purl side facing you, the upper stitch slants to the left on the knit side of the fabric.



Hint: SSK = K1 PSSO

Stockinet Stitch- Knit 1 Row, Purl 1 Row (K 2 rows on your knitting machine)

Discussion: Lace Making on the Knitting Machine

Lace is formed on your knitting machine by transferring stitches to the adjacent needle either right or left and then placing that needle from which the stitch was transferred from back into working position. Then, as the machine carriage is passed over these stitches, a small hole or eyelet is formed. When a pattern of eyelets is formed by placement and slant this is called knitted lace. This lace is created by either transferring these stitches (or stitch) right or left or both right and left of the point where the eyelet is to be made. Thus, a lace effect is made by the knitter by both the transferring of these stitches creating a slant, and the location of the eyelets from which these were created by the transferring of those stitches.

In hand knitting most directions is given for the knit side of the knitted fabric. Although these patterns can be created on the purl side as well, most often the purl side of the fabric is a “plain purl knitted row”. In machine knitting, this is exactly the opposite. This often confuses the hand and machine knitter who want to follow a pattern from the reverse side (purl) of the knitted fabric. What followed was the development of a knitting language of symbols or charts for hand knitters and later machine knitters to address this issue. Located in your 70D instruction book, you will find a Pattern Symbol Chart created for the machine knitter. Please note that although many hand-knitting patterns also use these symbols, many new programs have since added to or modified these symbols depending on its origin. Therefore, for those patterns that only provide a graphed chart to follow, always double check the knitting key for the interpretation of the knitting symbols. In this lesson, we will learn to convert hand knitting directions and symbols into a universal language suitable for machine knitting.

#16 Diamonds Baby Afghan

In this pattern, we will be using the same symbols learned from the last lesson to create an eyelet formed from the transferring of a single stitch that has a right or left slant. In this instance the end result will be a knitted fabric that has a lace patterned effect slanting **left** on the knitted side or **right** on the purl side.

Always read your pattern completely before beginning. Review what each direction (i.e. K2 tog, P2 tog, K1, PSSO, SSK) means to the machine knitter (see definitions). Refer to your 70D Instruction Book as needed if you forget. Remember in machine knitting we must move all of our stitches first before knitting the row. There are usually two knitted rows between the transferring of stitches. The first row is the knitted row that creates the loops over the needles left in work position (WP) after the stitches are transferred. The second row is a plain knitted row that knits another stitch in those



same loops left on those needles creating another knitted row (see pgs, 15, 17, and 21 in the 70D Instruction Book).

Look at your 70D Instruction Book Pattern Symbol Chart: **Please note that the pattern symbols are directed as if the knitted side is facing you.** I have included another pattern chart created for machine knitters. Please see the appendix. We will be using the first five symbols starting from the left on the pattern symbol chart in your 70D book to create the pattern in the Diamonds Baby Afghan. Find the corresponding stitch symbols in the appendix of this lesson. In hand knitting, the lace pattern created in this pattern is called “Open Diamonds”.

First, get out your pencil and paper. We will be transferring this lace pattern into a knitting diagram first. Then we will incorporate this pattern into the overall directions for knitting the afghan. This can be done in two ways. For those of you who can automatically think in the reverse, by following the above definitions you may automatically transfer those symbols according to the interpretations for the purl side of the fabric (reverse or for machine knit). For simple lace patterns, this may be easy, and that is what we will be doing for this Diamond Lace pattern. For the more difficult lace patterns I often suggest that you chart it first from the knit side, then flip over your pattern sheet to “see it” in the reverse. Knit it from the reverse side filling in the knit stitches for purl, and the purl stitches for knit. Confusing isn't it? This method is still most helpful when you have many slants and transferring of stitches to keep track of. I suggest you first mark your O's or lace holes (YO) first. To do this count how many stitches to be knitted first and from which row it begins. Mark the row # on the side of the graph paper for that row. Designate each box as a stitch. Counting over, mark the stitch or stitches that have the YO or O's first. Next, notice where in the knitting sentence does it say what happens either proceeding or following the O or YO to create the eyelet. Is it a K2 tog or a SSK? Are there any stitches knitted in-between? How many stitches are in-between? Make note of it on your graph paper. For instance, the pattern states: K 18, YO, SSK, K14 You would mark the YO on the 19th stitch box. Next, **SSK is a right slanting transfer stitch in machine knitting** (SSK is a left slanting stitch on the knitted side), so you would mark your graph paper for stitch # 20 as a right slanting transfer using the proper symbol, continuing on marking the following 14 K stitches as – in those boxes.

[Please note that for those of you charting from the knit side make sure you are able to change your mark when you flip over your paper. Remember the knit is a pearl and a pearl is a knit on the reverse side, in other words the (--) becomes (l) and vice versa. I always think of the MB as the – (line across) and the ribbing stitches as the l (lines up and down). When reversing your paper this can also change the sequence of O's (YO) and the transferring of the stitch, in which case you may have to transfer your stitch to the next needle, then move it back to its proper position to create the O or YO in its proper spot. I mark knit/ pearl stitches with pencil that can be changed when flipping over the charted diagram.]

Now note the charted diagrams I have made. Table I one was made for the knitting machine (in the reverse). You will use this chart for machine knitting. Please note the knitting key. The second diagram, Table II was charted from the knit side facing you.



If I flipped over the “knit side facing you” chart (Table II), and looked at it from the other side, I would need to change the purl stitches for knit and the knit stitches for purl. The slanted stitches for transfer would be angled in the opposite direction (right instead of left). On many hand knitted charts, the knit stitches are left as blank spaces while the purl stitches are noted as a – sign across the box. Once the chart is flipped over, with the angles slanted to the right, note where the O or YO need to be. Even though the **direction** of the transferred stitches are correct and do not need to be changed, the transferred stitches might in order to keep the O or YO stitch in the right place. In that case, one would need to transfer the following stitch over one, and then move both of the stitches back, so that the original empty needle created would be in its proper needle position. Try charting both ways once you are comfortable charting in the reverse. Once you have, do not be surprised if you devise a better method of charting this information for yourself. The main point is in the accurate interpretation of the information in a way that YOU can understand. Machine knitting charts are usually already charted in the reverse. Always remember that the hand knitting charts found in hand knit books need to be changed to the reverse in order for the machine knitter to keep the exact same look of the pattern on the knit side of the fabric. Try knitting the sample pattern on a scrap piece of knitting to save. You will need this piece for taking a gauge. Keep it for future reference. Later, with experience, you may want to combine these patterns to create your own look.

Rows #1-7: Follow the garter stitch pattern transferring your stitches between both beds.

Rows # 8-11: Transfer your stitches to the main bed (MB), transferring the first and last 5 stitches accordingly on each row to create the garter stitch.

Row #12: In reviewing the diamond lace pattern, notice that on row #12 the lace pattern begins. Starting on either the right or the left side of your machine (depending on which side you started on), count over the first 18 sts to be knitted (including the stitches in the garter pattern). Some people mark these spots on the needle bed with a removable mark for future reference. Interpreting the sentence, we would count over (K) 18 sts, YO, (make an eyelet next stitch) which is created by a SSK. SSK in machine knitting terms would be a transfer of the stitch to the right. If you had started counting from the left, by transferring the 19th stitch to the right, we create an eyelet on stitch #19 (YO) and keep the first 18 stitches as they are knitted in pattern. Now,* count over 14 sts (K 14), then transfer the next stitch (#15) to the right (#16) to create an eyelet on stitch 15* repeat between *-*, ending the row with 18 sts remaining on your machine following the garter stitch pattern on the ends (K 18 sts, this includes the 5 garter pattern stitches on the end).

If you desire, mark these key needles for further reference. Just do not get the marks on you or your yarn and make sure they can come off easily. I use colored sticky dots.

Please note*** If you start counting on the right, you would need to transfer stitch #20 to the next stitch on the right (#19), then move it back over to the left again to create a O or YO on its right needle (on stitch #19). This is done to keep the O or YO in its correct position, while maintaining the right slant to create it with. Knit across this row, transferring the first and last 5 sts accordingly.



Rows # 13: Knit back. Transfer the first and last 5 sts accordingly between beds to create the garter stitches.

Row #14, Transfer the first 5 and last 5 stitches accordingly and count over 17 stitches (K17sts). Transfer the 18th st to the right creating an eyelet on the 18th needle. The 19th needle has the two stitches (that were SSK), on the 20th stitch create another eyelet by transferring that stitch (#20) to the right (SSK) to the 21st stitch. * K 12 sts, create an eyelet (O, or YO) by transferring the next stitch (#13) to the right (SSK) twice*, repeat from *-* across, following the pattern until the last 5 stitches. Notice that when reading your pattern, the SSK is counted as one stitch.

If you look at the eyelets created, they should start forming a pattern around each other. The two eyelets should be above the previous eyelet formed before creating the beginnings of a V-like pattern. Follow the pattern through to create the larger diamond pattern. Notice that on rows # 21-25 (4 rows) are knit with just the garter pattern on the edge, and on row 26, the diamond pattern begins again. By counting over only 10 sts before starting your eyelet pattern (including the 5 garter end stitches), the diamond pattern starts to alternate between the previous diamond patterns completed. Do not be afraid to look at the finished pattern in the picture to give you hints when you are stuck. At this point, you should be able to recognize the patterns created by knitted stitches made from right and left transfers.

Try to finish the last row of your knitting as you begun. If you started in a crochet cast on then finish with one. When knitting with the ribber I always use at least one to two tensions tighter than my main bed, especially when knitting the garter stitch. Try your yarn swatch with the garter stitch on both ends using the tension you think you would like. I find the garter stitch tends to stretch like an accordion, and that a slightly tighter tension on the ribber helps to keep a proper shape in accordance to the rest of the knitted fabric.

Press lightly, or block into shape. The yarn I used needed to be pressed to get the proper drape I was looking for. If you “knit to fit”, be careful when steaming or pressing your item. Knitting can easily distort with too much steam and/or pressure. Please note that the finish work in hand knitting or machine knitting is mostly the same. If you cannot find a good finishing book for machine knitting, try looking at some excellent hand knitting books. Good Luck and Happy Knitting!

Copyright 2002, Imagine This Productions

Table I Machine Knitting Graph Key

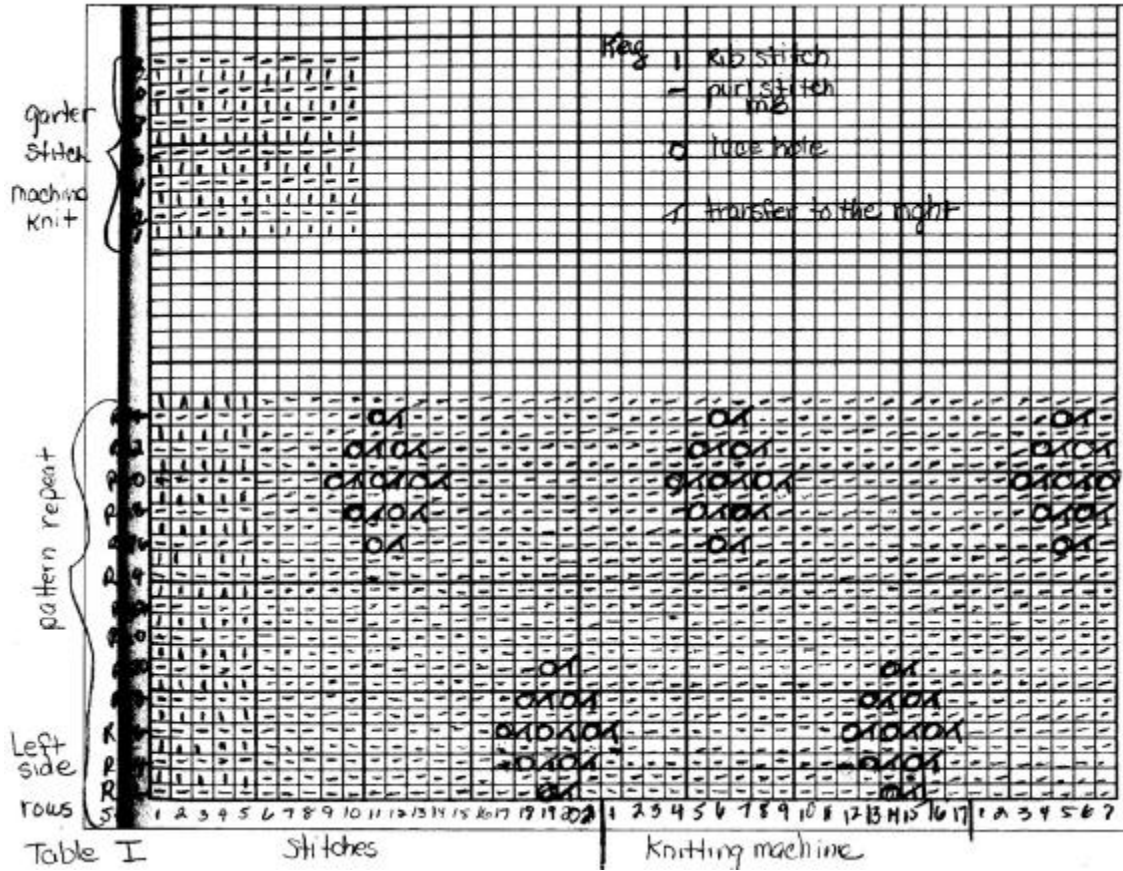
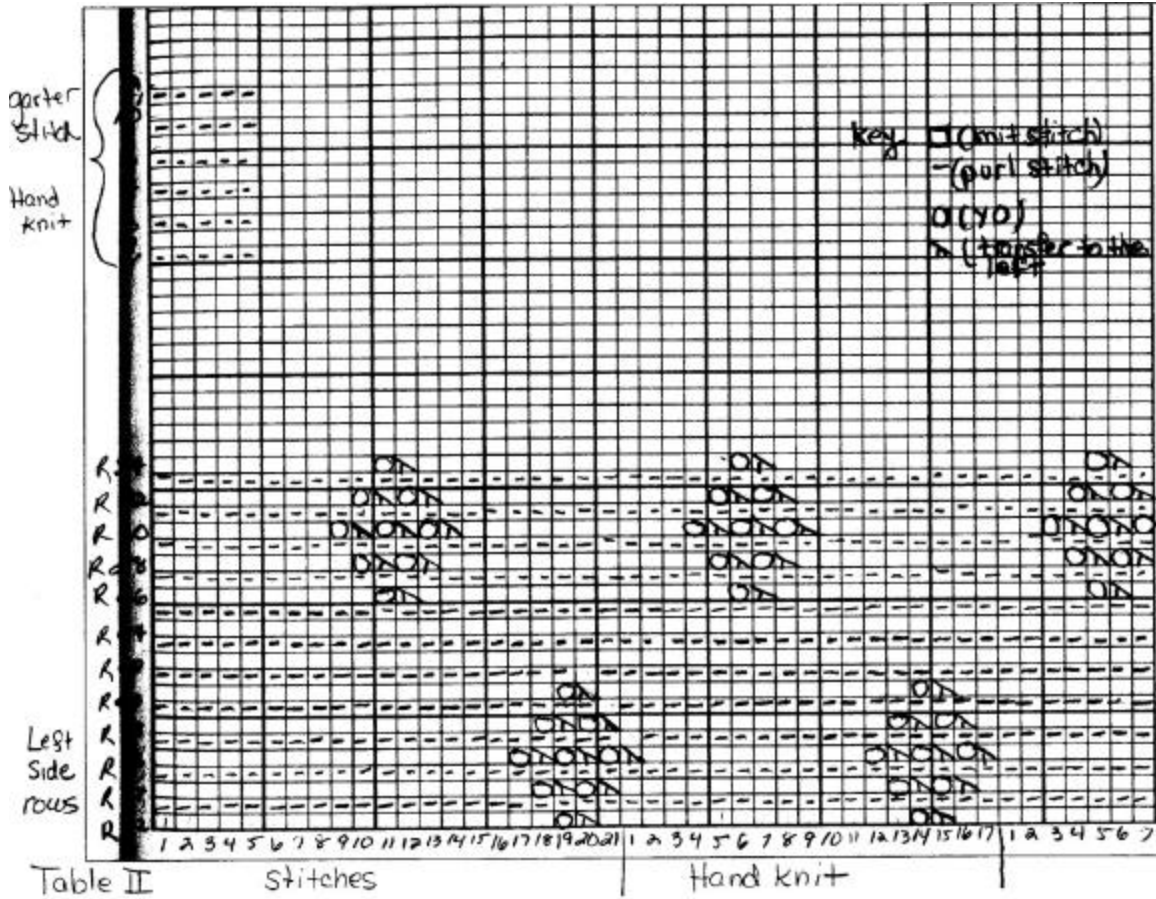

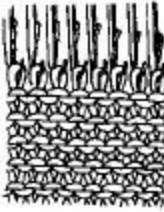
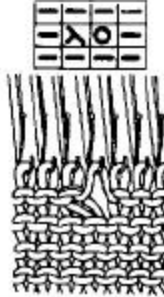



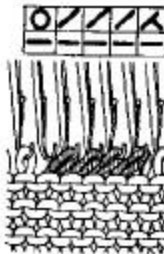







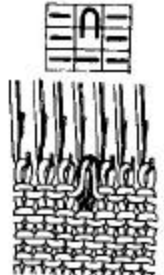


Table II Hand Knitting Graph Key



Japanese Machine Knit Symbol Chart

編み目記号

<p>表目</p> 	<p>裏目</p> 	<p>かけ目</p> 	<p>右上2目1度</p> 
<p>左上2目1度</p> 	<p>3目1度</p> 	<p>右寄せ目</p> 	<p>左寄せ目</p> 
<p>右増し目</p> 	<p>左増し目</p> 	<p>右上交差</p> 	<p>左上交差</p> 
<p>中下交差</p> 	<p>浮き目</p> 	<p>引き上げ目</p> 	<p>変わりゴム編目</p> 